



SEB Series

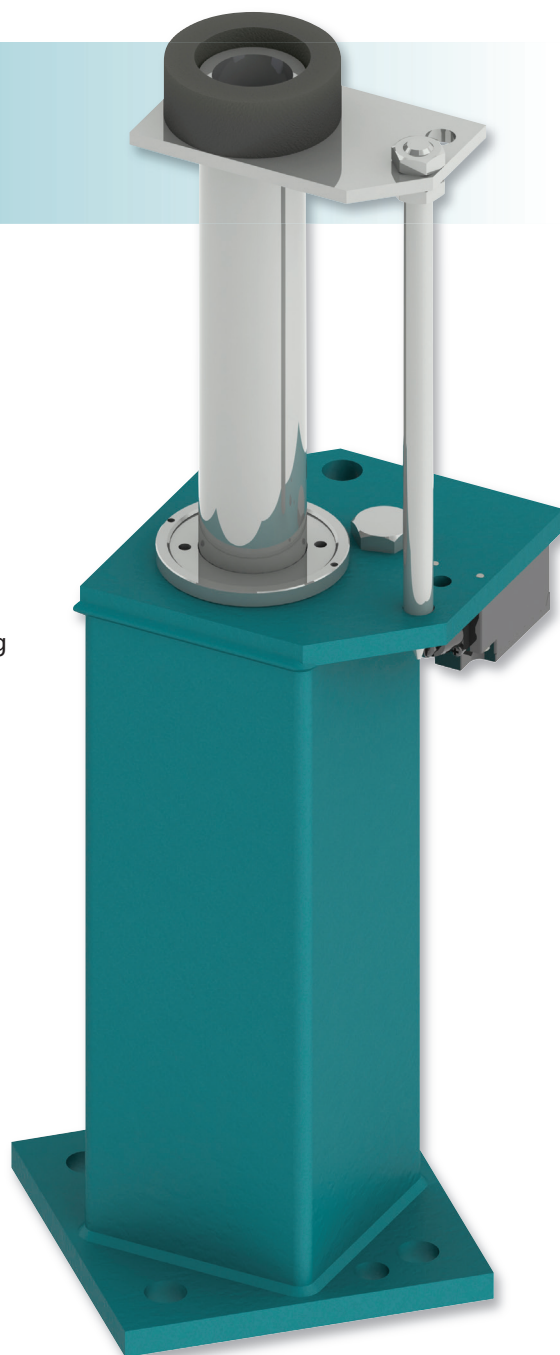
SEB buffers incorporate gas spring technology to provide a premium and robust passenger safety solution for slow to medium speed elevators.

The units are designed and manufactured according to strict engineering principles and are universally approved and globally certified.

SEB buffers can be shipped in a compressed condition which saves space and reduces transportation costs. The units can also be supplied oil filled which saves time and reduces the risk of errors during installation.

Product features

- Quick & Easy installation
- Energy dissipation buffer
- Minimum G-force experience (increased passenger protection)
- Lowest possible compressed height for specified mass range
- Smallest space envelope possible
- Reduced weight means that shipping costs are significantly lower
- Globally certified to ASMEA17.1:2016/CSA B44:16, EN81-20/50, GB7588, EAC, KC
- California state approved
- Wide mass range 992-10020 lbs
- Self contained, maintenance free (except statutory inspections) unit
- Gas spring return
- All supporting documentation available online



Available to order online

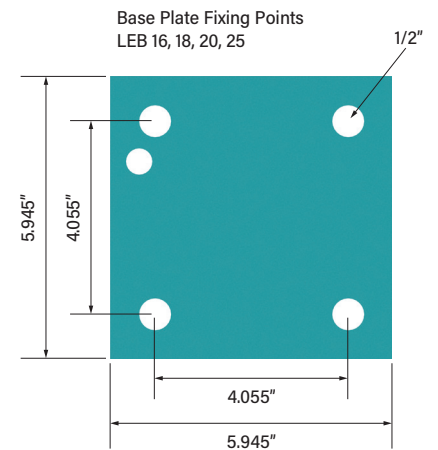
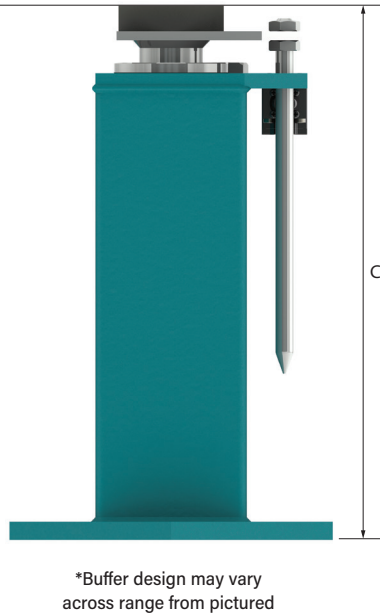
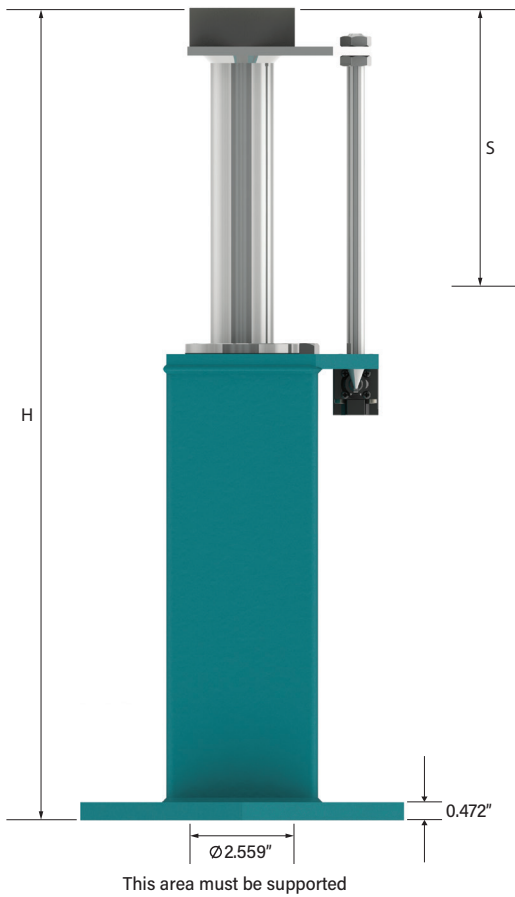
Model		SEB 16	SEB 18	SEB 20	SEB 25
Rated speed	fpm	315	354	400	500
Impact mass range	lbs	992-10020	992-10020	992-10020	992-10020

- Passenger**
- Express**
- Commercial**
- Modernisation**
- Freight**
- Vehicle**
- Special Applications**



Model		SEB 16	SEB 18	SEB 20	SEB 25
Stroke 'S' (min.)	in	6.811	8.622	10.984	17.126
Height 'H' max. (extended)**	in	21.260	25.315	30.591	44.331
Height 'C' min. (compressed)**	in	13.811	16.055	18.969	26.567
Weight no oil (dry)	lbs	25.97	29.23	33.69	45.08
Oil volume	US Gallons	0.38	0.47	0.58	0.87

**The max and min figures provided take account of the extremes of the tolerance to provide absolute maximum and absolute minimum dimensions.



Range Overview

