

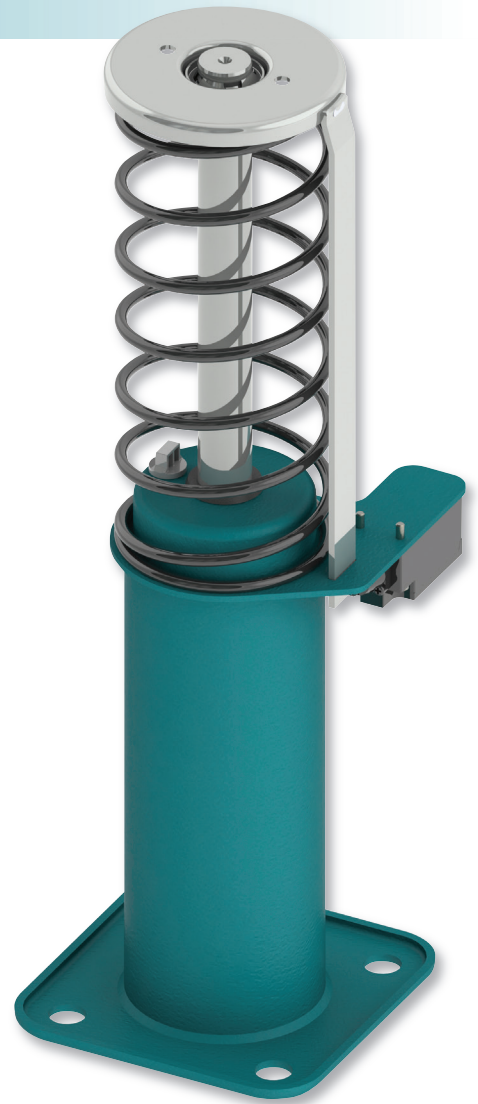
The LSB range incorporates a mechanical return spring with proven oil dissipation technology to ensure a reliable safety solution for low speed, low mass passenger elevators.

The buffers are designed and manufactured according to strict engineering standards and are universally approved and globally certified.

Our LSB units are smaller and weigh considerably less than many alternatives and they can be supplied oil filled which reduces the cost of logistics, saves time and reduces the risk of errors during installation.

### Product features

- Quick & Easy installation
- Energy dissipation buffer
- Minimum G-force experience (increased passenger protection)
- Lowest possible compressed height for specified mass range
- Globally certified to ASMEA17.1: 2016/CSA B44:16, EN81-20/50, GB7588, EAC, KC
- California state approved
- Wide mass range 838-7165 lbs
- Self contained, maintenance free (except statutory inspections) unit
- Lightweight
- Mechanical spring return
- All supporting documentation available online

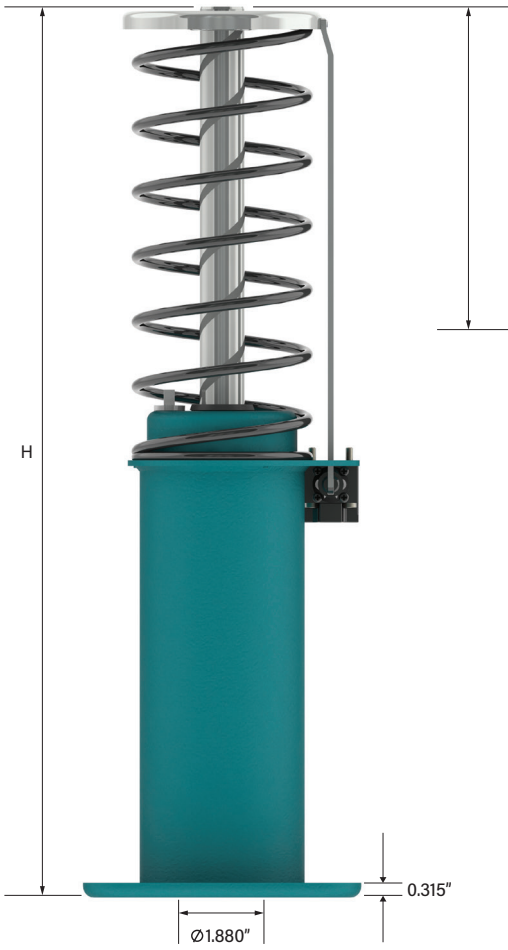


Available to order online

Model	LSB 10	
Rated speed	fpm	200
Impact mass range	lbs	838-7165

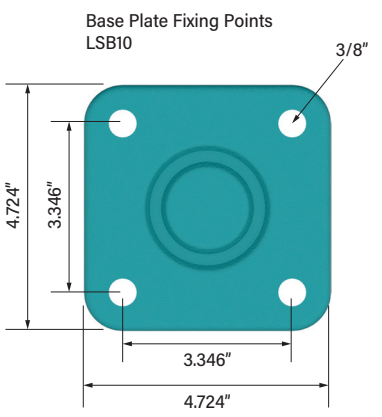
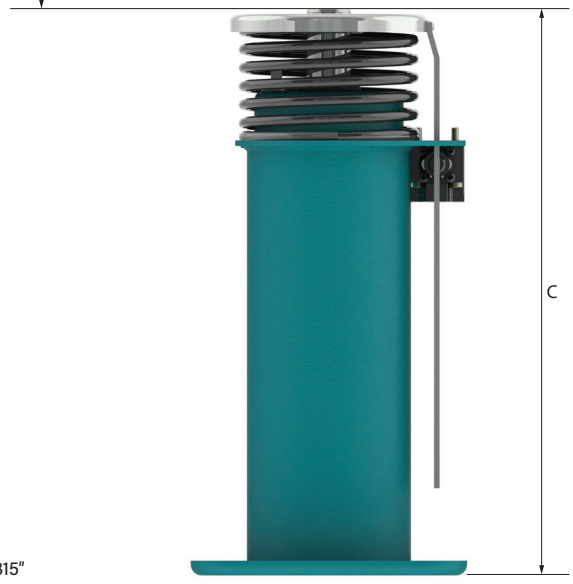
- Passenger**
- Express
- Commercial
- Modernisation**
- Freight
- Vehicle
- Special Applications





Model	LSB 10	
Stroke 'S' (min.)	in	2.890
Height 'H' max. (extended)**	in	8.748
Height 'C' min. (compressed)**	in	5.744
Weight no oil (dry)	lbs	7.78
Oil volume	US Gallons	0.12

\*\*The max and min figures provided take account of the extremes of the tolerance to provide absolute maximum and absolute minimum dimensions.



This area must be supported

\*Buffer design may vary across range from pictured

## Range Overview

